



Campbell Fittings

Sanitary Fittings

Tri-Clamp Fittings, Clamps, and Accessories



A₃
RPSCQC
No. 70

Tri-Clamp Hose Fittings	3
3A Tri-Clamp Crimp Hose Fittings	3
Tri-Clamp Adapter Fittings	4
3A Long Shank Brewery Hose Adapter	4
3A Rubber Hose Adapter	4
Tri-Clamp x Male NPT	5
Tri-Clamp x Female NPT	5
3A Tri-Clamp x Weld Short	6
3A Tri-Clamp x Weld Long	6
Tri-Clamps	7
Heavy Duty Single Pin Tri-Clamp	7
Heavy Duty Double Pin Tri-Clamp	7
Heavy Duty High Pressure Bolt Tri-Clamp	7
Easy Install Squeeze Tri-Clamp	7
Accessories	8
Tri-Clamp Bumper	8
Tri-Clamp Gaskets	9
Buna-N Black	9
EPDM Black	9
FKM Black	9
Buna-N White	9
PTFE White	9
Silicone White	9
Ferrules	10
3A Machined Crimpnology™ Ferrules	10
Crimpnology™ 304 Stainless Steel Ferrules	11

CONTACT US!

800-367-3678
info@campbellfittings.com
www.campbellfittings.com

About Us

Campbell Fittings, part of the Ideal Tridon Group, has been engineering and manufacturing superior quality industrial hose fittings, couplings, ferrules, and sleeves for generations.

The premier manufacturer in hose system technology, Campbell introduced the industry leading **Crimpnology™ System** in the 1990s. Crimpnology guarantees unmatched hose system safety and performance for fluid and material transfer hoses.

Campbell's sanitary fitting line extends Crimpnology coverage to food, wine, beer and other sanitary process hose assemblies, including 3-A certified hose assemblies.

Learn more at CampbellFittings.com.



Tri-Clamp Hose Fittings

Campbell's line of Tri-Clamp hose fittings are engineered for superior performance in sanitary process applications.

Features & Benefits

- Campbell Crimpnology offers hose assembly systems for food grade hose applications
- Specially designed shank and ferrule lengths are matched for hose tube and cover protection
- Dedicated silicone bumper seat area on fitting
- All products listed as 3A components are certified to meet 32 Ra minimum polish and all other 3A criteria under 3A RPSCQC. (Certificate on page 12)

Crimp Specifications

- Provided for all hoses for proven performance (*3A crimp process exception*)
- Carry industry leading safety factors, 4:1 in most applications
- Specifications to match machined ferrule or standard ferrule

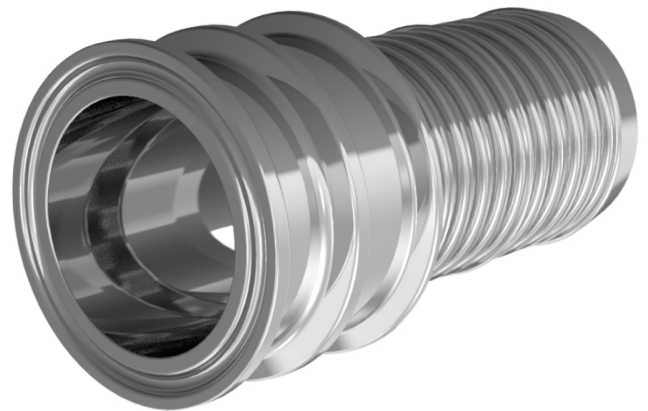
3A Tri-Clamp Crimp Hose Fittings

Features & Benefits

- 3A RPSCQC for 62-02 sanitary assemblies
- 316 stainless steel
- 32 Ra polish on food contact surface
- For use with 3A 304 Stainless Steel Machined Crimpnology Ferrules (pg 10) or Crimpnology 304 Stainless Steel Ferrules (pg 11)
- For use with Sanitary Single Pin, Double Pin, Bolt, or Squeeze Tri-Clamps (pg 7)
- For use with Tri-Clamp gaskets (pg 9)

Part Number	TC Size	Hose Size
TC-4C A316	1"	1"
TC-6C A316	1-1/2"	1-1/2"
TC-8C A316	2"	2"
TC-10C A316	2-1/2"	2-1/2"
TC-12C A316	3"	3"
TC-16C A316	4"	4"
TCR-6X4C A316	1-1/2"	1"

Hose System Components			MAX. SYSTEM WORKING PRESSURE (PSI @ 70°F)					
			Hose Size					
Fitting/Coupling	Attachment	Hose Type	1	1-1/2	2	2-1/2	3	4
Tri-Clamp	Ferrule	Sanitary	500	450	350	325	300	TBD
Tri-Clamp	Mach. Ferrule	Sanitary	500	500	400	375	350	TBD

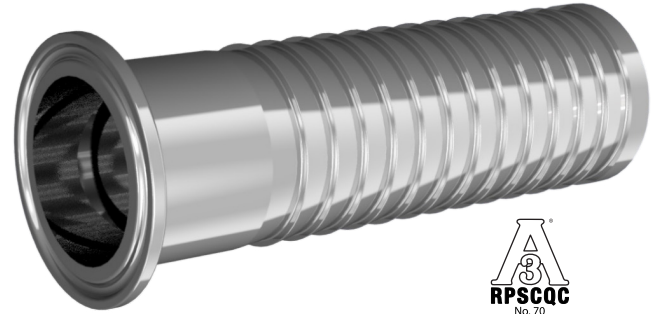


3A Long Shank Brewery Hose Adapter

Features & Benefits

- 3A RPSCQC for 62-02 sanitary assemblies
- 304 stainless steel
- 32 Ra polish on food contact surface
- For use with Sanitary Single Pin, Double Pin, Bolt, or Squeeze Tri-Clamps (pg 7)
- For use with Tri-Clamp gaskets (pg 9)

Part Number	TC Size	Hose Size
BATC-4 304	1"	1"
BATC-6 304	1-1/2"	1-1/2"
BATC-8 304	2"	2"
BATC-12 304	3"	3"
BATC-16 304	4"	4"



3A Rubber Hose Adapter

Features & Benefits

- 3A RPSCQC for 62-02 sanitary assemblies
- 316 stainless steel
- 32 Ra polish on food contact surface
- For use with Sanitary Single Pin, Double Pin, Bolt, or Squeeze Tri-Clamps (pg 7)
- For use with Tri-Clamp gaskets (pg 9)

Part Number	TC Size	Hose Size
RATC-4X2 316	1"	1/2"
RATC-4X3 316	1"	3/4"
RATC-4 316	1"	1"
RATC-6X2 316	1-1/2"	1/2"
RATC-6X58 316	1-1/2"	5/8"
RATC-6X3 316	1-1/2"	3/4"
RATC-6X4 316	1-1/2"	1"
RATC-6 316	1-1/2"	1-1/2"
RATC-8X6 316	2"	1-1/2"
RATC-8 316	2"	2"
RATC-10 316	2-1/2"	2-1/2"
RATC-12 316	3"	3"
RATC-16 316	4"	4"



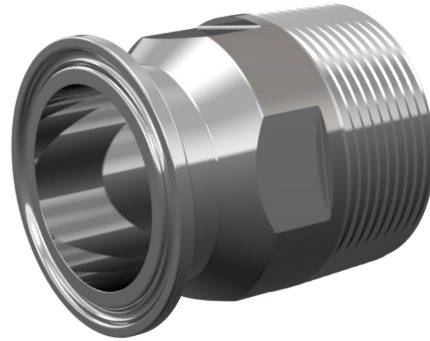
Tri-Clamp Adapter Fittings

Tri-Clamp x Male NPT

Features & Benefits

- 316 stainless steel
- 32 Ra polish on food contact surface
- For use with Sanitary Single Pin, Double Pin, Bolt, or Squeeze Tri-Clamps (pg 7)
- For use with Tri-Clamp gaskets (pg 9)

Part Number	TC Size	NPT Size
TCM-4X3 316	1"	3/4"
TCM-4 316	1"	1"
TCM-6 316	1-1/2"	1-1/2"
TCM-6X8 316	1-1/2"	2"
TCM-8X6 316	2"	1-1/2"
TCM-8 316	2"	2"
TCM-10X8 316	2-1/2"	2"
TCM-10 316	2-1/2"	2-1/2"
TCM-12X8 316	3"	2"
TCM-12 316	3"	3"
TCM-16 316	4"	4"

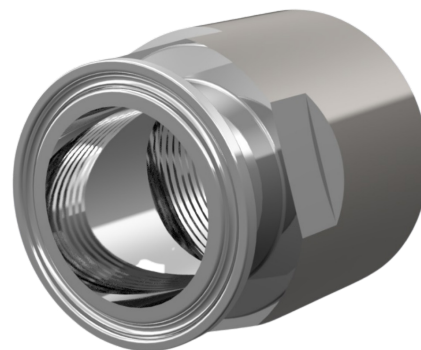


Tri-Clamp x Female NPT

Features & Benefits

- 316 stainless steel
- 32 Ra polish on food contact surface
- For use with Sanitary Single Pin, Double Pin, Bolt, or Squeeze Tri-Clamps (pg 7)
- For use with Tri-Clamp gaskets (pg 9)

Part Number	TC Size	NPT Size
TCF-4X3 316	1"	3/4"
TCF-4 316	1"	1"
TCF-6 316	1-1/2"	1-1/2"
TCF-6X8 316	1-1/2"	2"
TCF-8X6 316	2"	1-1/2"
TCF-8 316	2"	2"
TCF-10X8 316	2-1/2"	2"
TCF-10 316	2-1/2"	2-1/2"
TCF-12X8 316	3"	2"
TCF-12 316	3"	3"
TCF-16 316	4"	4"



3A Tri-Clamp x Weld Short

Features & Benefits

- 3A RPSCQC for 62-02 sanitary assemblies
- 316 stainless steel
- 32 Ra polish on food contact surface
- For use with Sanitary Single Pin, Double Pin, Bolt, or Squeeze Tri-Clamps (pg 7)
- For use with Tri-Clamp gaskets (pg 9)

Part Number	TC Size	Hose Size
TCSW-2 316	1/2"	1/2"
TCSW-3 316	3/4"	3/4"
TCSW-4 316	1"	1"
TCSW-6 316	1-1/2"	1-1/2"
TCSW-8 316	2"	2"
TCSW-10 316	2-1/2"	2-1/2"
TCSW-12 316	3"	3"
TCSW-16 316	4"	4"

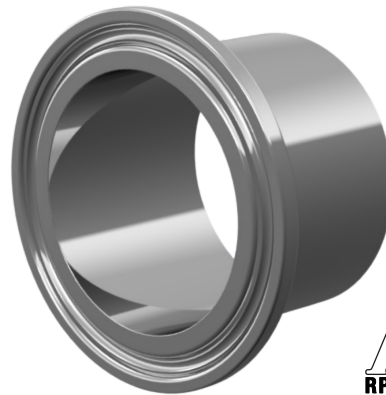


3A Tri-Clamp x Weld Long

Features & Benefits

- 3A RPSCQC for 62-02 sanitary assemblies
- 316 stainless steel
- 32 Ra polish on food contact surface
- For use with Sanitary Single Pin, Double Pin, Bolt, or Squeeze Tri-Clamps (pg 7)
- For use with Tri-Clamp gaskets (pg 9)

Part Number	TC Size	Hose Size
TCLW-2 316	1/2"	1/2"
TCLW-3 316	3/4"	3/4"
TCLW-4 316	1"	1"
TCLW-6 316	1-1/2"	1-1/2"
TCLW-8 316	2"	2"
TCLW-10 316	2-1/2"	2-1/2"
TCLW-12 316	3"	3"
TCLW-16 316	4"	4"



Tri-Clamps

Heavy Duty Single Pin Tri-Clamp

Features & Benefits

- 304 stainless steel
- For use with Tri-Clamp fittings (pg 3)
- For use with Tri-Clamp adapters (pg 4)

PN	TC Size
TCC-3	1/2"
TCC-3	3/4"
TCC-6	1"
TCC-6	1-1/2"
TCC-8	2"
TCC-12	3"
TCC-16	4"

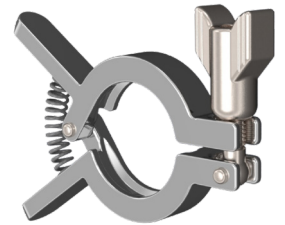


Easy Install Squeeze Tri-Clamp

Features & Benefits

- 304 stainless steel
- One-handed installation
- For use with Tri-Clamp fittings (pg 3)
- For use with Tri-Clamp adapters (pg 4)

PN	TC Size
TCC-3SQ	1/2"
TCC-3SQ	3/4"
TCC-6SQ	1"
TCC-6SQ	1-1/2"
TCC-8SQ	2"
TCC-10SQ	2-1/2"
TCC-12SQ	3"
TCC-16SQ	4"



Heavy Duty Double Pin Tri-Clamp

Features & Benefits

- 304 stainless steel
- Double pin design for consistent sealing pressure
- For use with Tri-Clamp fittings (pg 3)
- For use with Tri-Clamp adapters (pg 4)

PN	TC Size
TCC-6DP	1"
TCC-6DP	1-1/2"
TCC-8DP	2"
TCC-10DP	2-1/2"
TCC-12DP	3"
TCC-16DP	4"

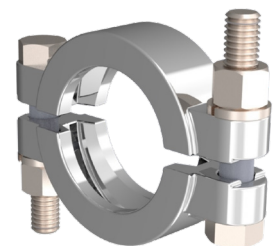


Heavy Duty High Pressure Bolt Tri-Clamp

Features & Benefits

- 304 stainless steel
- Double bolt design safer at higher pressures
- For use with Tri-Clamp fittings (pg 3)
- For use with Tri-Clamp adapters (pg 4)

PN	TC Size
TCC-6BT	1"
TCC-6BT	1-1/2"
TCC-8BT	2"
TCC-10BT	2-1/2"
TCC-12BT	3"
TCC-16BT	4"



Tri-Clamp Bumper

Features & Benefits

- Fits into machined recessed area on Tri-Clamp fittings (pg 3)
- 100% FDA silicone
- Stretches over installed fitting for easy on/off installation
- Easy replacement

PN	Size
TCB-4	1"
TCB-6	2"
TCB-8	2"
TCB-10	2-1/2"
TCB-12	3"
TCB-16 <i>Coming Soon</i>	4"



Tri-Clamp Gaskets

Features & Benefits

- Materials compliant with FDA Code of Federal Regulations under Title 21

Buna-N Black

PN	TC Size
TCGB-4	1"
TCGB-6	1-1/2"
TCGB-8	2"
TCGB-10	2-1/2"
TCGB-12	3"
TCGB-16	4"



Buna-N White

PN	TC Size
TCGB-4W	1"
TCGB-6W	1-1/2"
TCGB-8W	2"
TCGB-10W	2-1/2"
TCGB-12W	3"
TCGB-16W	4"



EPDM Black

PN	TC Size
TCGE-4	1"
TCGE-6	1-1/2"
TCGE-8	2"
TCGE-10	2-1/2"
TCGE-12	3"
TCGE-16	4"



PTFE White

PN	TC Size
TCGT-4	1"
TCGT-6	1-1/2"
TCGT-8	2"
TCGT-12	3"
TCGT-16	4"



FKM Black

PN	TC Size
TCGV-4	1"
TCGV-6	1-1/2"
TCGV-8	2"
TCGV-12	3"
TCGV-16	4"



Silicone White

PN	TC Size
TCGS-4	1"
TCGS-6	1-1/2"
TCGS-8	2"
TCGS-12	3"
TCGS-16	4"



3A 304 Stainless Steel Machined Crimpnology Ferrules

Features & Benefits

- 3A RPSCQC for 62-02 sanitary assemblies
- 304 stainless steel
- 32 Ra polish
- Precision CNC machined to mate exclusively with Campbell's 3A Tri-Clamp Crimp Hose Fittings (pg 3).
- Meets Crimpnology specifications



Part Number	Hose Size	Ferrule I.D.
SAN100132	1	1-32/64
SAN100138	1	1-38/64
SAN100144	1	1-44/64
SAN100150	1	1-50/64
SAN150204	1-1/2	2-4/64
SAN150210	1-1/2	2-10/64
SAN150216	1-1/2	2-16/64
SAN150220	1-1/2	2-20/64
SAN200240	2	2-40/64
SAN200244	2	2-44/64
SAN200250	2	2-50/64
SAN200256	2	2-56/64
SAN250312	2-1/2	3-12/64
SAN250318	2-1/2	3-18/64
SAN250324	2-1/2	3-24/64
SAN300340	3	3-40/64
SAN300348	3	3-48/64
SAN300352	3	3-52/64
SAN300360	3	3-60/64
SAN300400	3	4

4" Coming Soon!

Ferrules

Crimpnology 304 Stainless Steel Ferrules

Features & Benefits

- 304 stainless steel
- Meets Crimpnology specifications
- For use with Tri-Clamp fittings (pg 3)



Part Number	Hose Size	Ferrule I.D.
FSS100132	1	1-32/64
FSS100136	1	1-36/64
FSS100140	1	1-40/64
FSS100144	1	1-44/64
FSS100148	1	1-48/64
FSS100152	1	1-52/64
FSS125152	1/4	1-52/64
FSS125156	1/4	1-56/64
FSS125160	1/4	1-60/64
FSS150160	1-1/2	1-60/64
FSS150200	1-1/2	2
FSS150204	1-1/2	2-4/64
FSS150208	1-1/2	2-8/64
FSS150212	1-1/2	2-12/64
FSS150216	1-1/2	2-16/64
FSS150220	1-1/2	2-20/64
FSS150224	1-1/2	2-24/64
FSS200232	2	2-32/64
FSS200236	2	2-36/64
FSS200240	2	2-40/64
FSS200244	2	2-44/64
FSS200248	2	2-48/64
FSS200252	2	2-52/64
FSS200256	2	2-56/64
FSS200260	2	2-60/64

Part Number	Hose Size	Ferrule I.D.
FSS250308	2-1/2	3-8/64
FSS250312	2-1/2	3-12/64
FSS250316	2-1/2	3-16/64
FSS250320	2-1/2	3-20/64
FSS250328	2-1/2	3-28/64
FSS300336	3	3-36/64
FSS300340	3	3-40/64
FSS300344	3	3-44/64
FSS300348	3	3-48/64
FSS300352	3	3-52/64
FSS300356	3	3-56/64
FSS300360	3	3-60/64
FSS300400	3	4
FSS400436	4	4-36/64
FSS400440	4	4-40/64
FSS400444	4	4-44/64
FSS400448	4	4-48/64
FSS400452	4	4-52/64
FSS400456	4	4-56/64
FSS400460	4	4-60/64
FSS400500	4	5
FSS400504	4	5-4/64

3-A Sanitary Standards, Inc.

Replacement Parts and System Component Qualification Certificate

This Is To Acknowledge That

Campbell Fittings

301 S. Washington St, Boyertown, PA 19512

Has successfully met the requirements of the Replacement Parts and System Component
Qualification Certificate program for:

Type of Part(s): 3-A RPSCQC for (00-00) General Requirements, 3-A RPSCQC for (62-02) Hose
Assemblies, 3-A RPSCQC for (63-03) Sanitary Fittings

Model Designations: Stainless Steel Sanitary TC Fittings and Machined Ferrules (CIP) Master List 1. Brewery Hose Adapter Tri-Clamp 304: BATC-4, BATC-6, BATC-8, BATC-12 and BATC-16 2. Rubber Hose Adapter Tri-Clamp 316: RATC-4X2, RATC-4x3, RATC-4, RATC-6x2, RATC-6x58, RATC-6x3, RATC-6x4, RATC-6, RATC-8x6, RATC-8, RATC-10, RATC-12 and RATC-16 3. Tri-Clamp Short Weld 316: TCSW-2, TCSW-3, TCSW-4, TCSW-6, TCSW-8, TCSW-10, TCSW-12 and TCSW-16 4. Tri Clamp Long Weld 316: TCLW-2, TCLW-3, TCLW-4, TCLW-6, TCLW-8, TCLW-10, TCLW-12 and TCLW-16 5. Tri-Clamp Crimp Hose Ends 316: TC-4C, TC-6C, TC-8C, TC-10C, TC-12C, TC-16C and TCR6X4C 6. Machined Ferrules 304: SAN100, SAN150, SAN200, SAN250, SAN300 and SAN400

Valid through: December 31, 2022

Timothy R. Rugh

Executive Director, 3-A sanitary Standards, Inc.

The issuance of this certificate is based upon the voluntary certification, by the applicant for it, that the processing system listed herein conforms to the applicable provisions of the currently effective 3-A Standard(s) or 3-A Accepted Practice(s). Legal responsibility for conformance is solely that of the holder of this Certificate. 3-A Sanitary Standards, Inc. does not warrant that the holder of a certificate at all times conforms to the applicable provisions of the said 3-A Accepted Practice. This in no way affects the responsibility of 3-A Sanitary Standards, Inc. to take appropriate action in such cases in which evidence of nonconformance has been established.

Next TPV Inspection/Report due: **April 2026**



301 S. Washington Street
Boyertown, PA 19512

800-367-3678 | www.campbellfittings.com